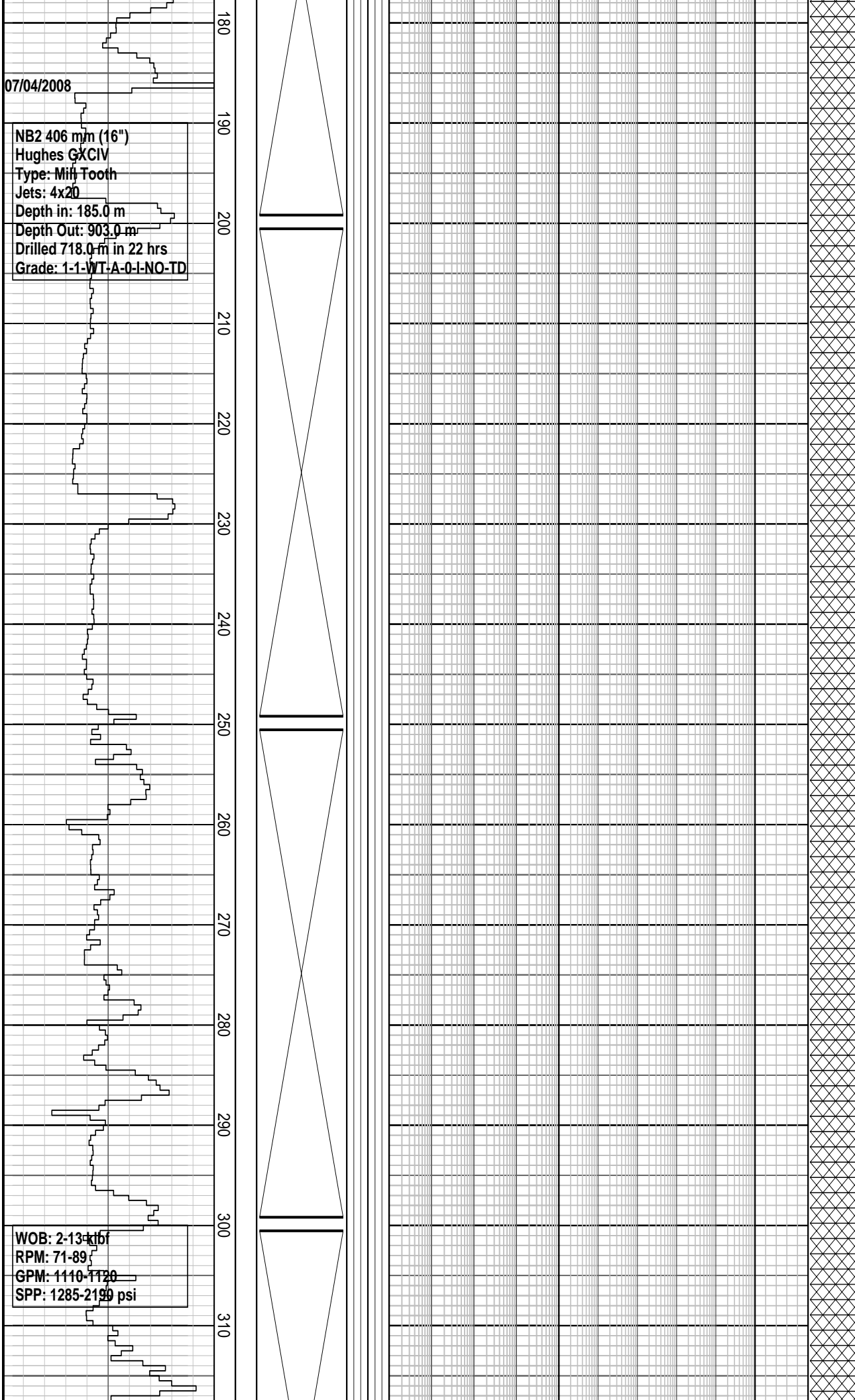


660 mm (26") Section TD @
185.0 mMDRT on 07/04/2008

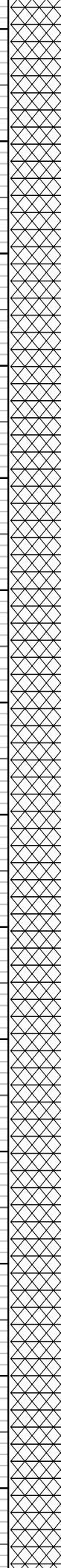
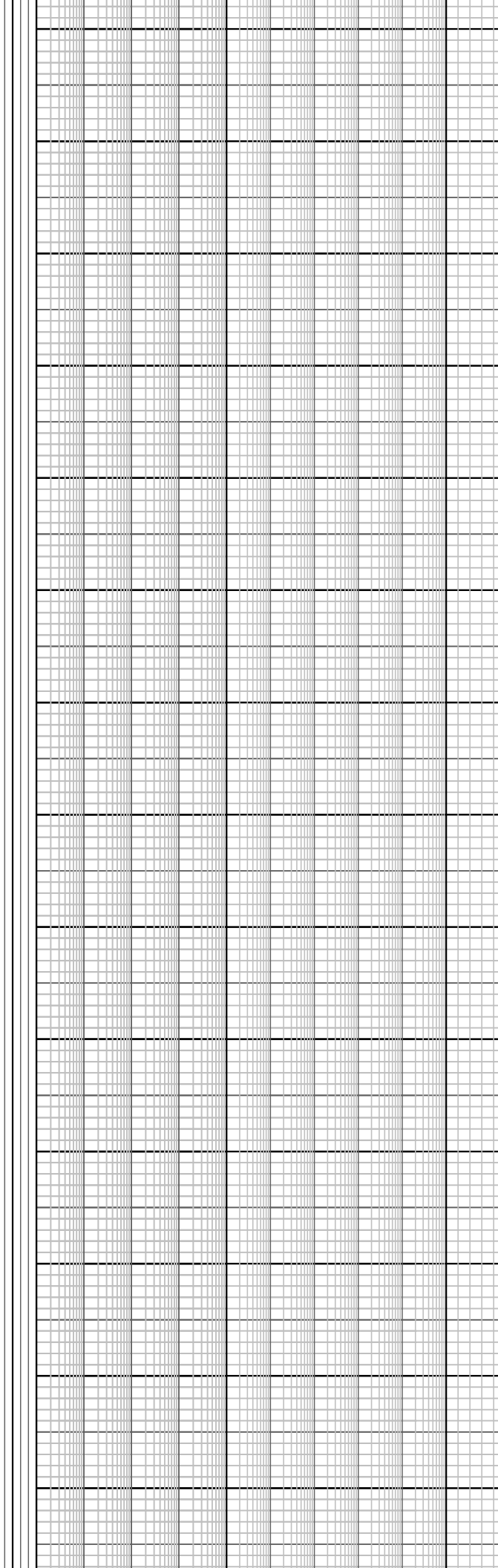
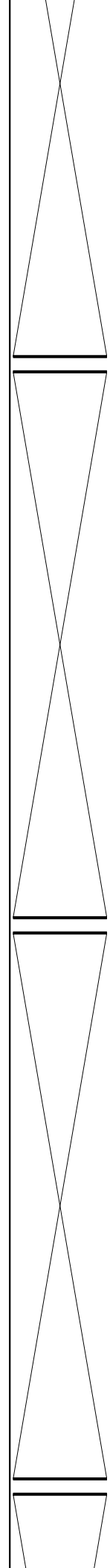
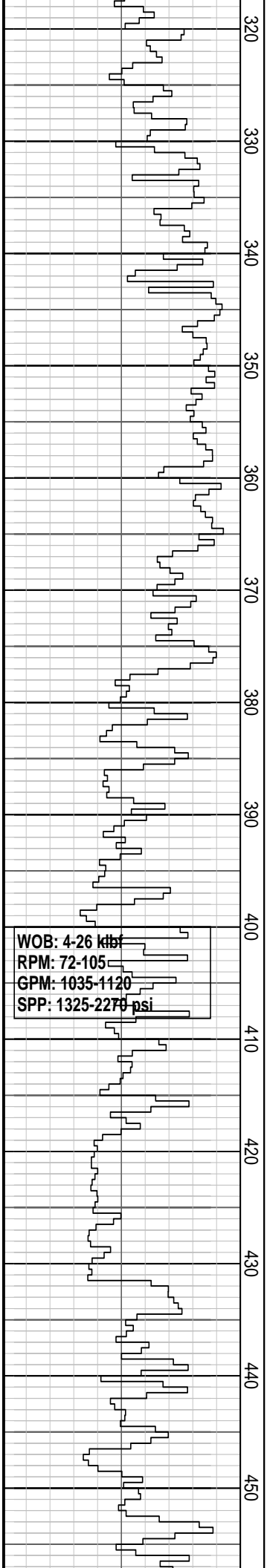
07/04/2008

NB2 406 mm (16")
Hughes GX CIV
Type: Mifflin Tooth
Jets: 4x20
Depth in: 185.0 m
Depth Out: 903.0 m
Drilled 718.0 m in 22 hrs
Grade: 1-1-WT-A-0-I-NO-TD

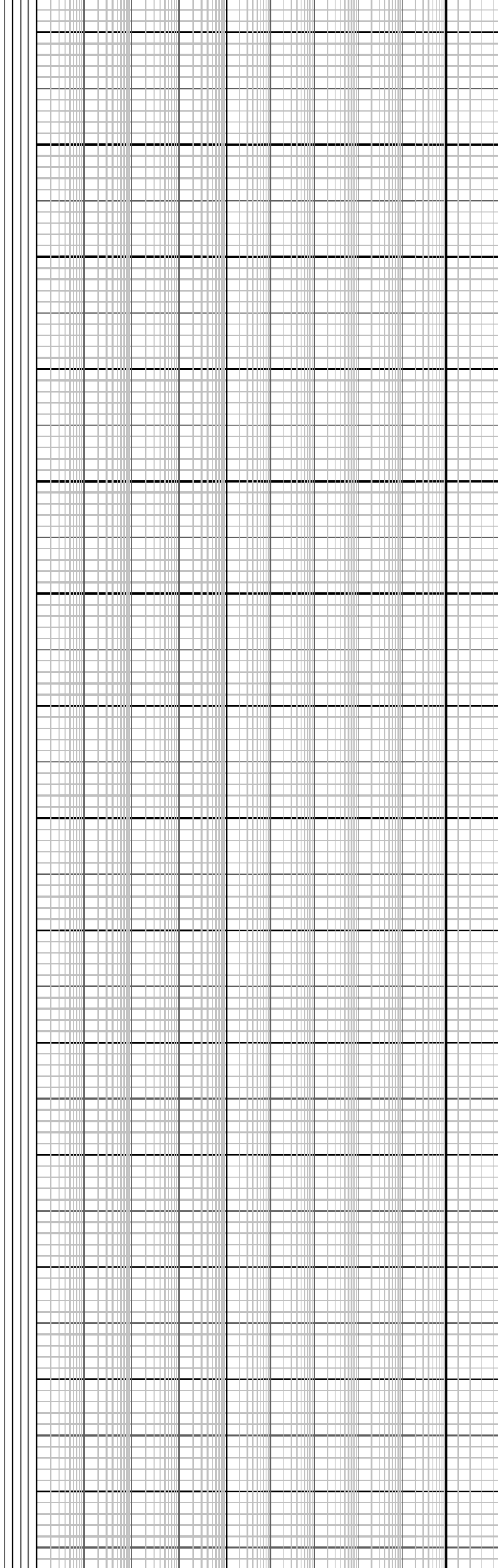
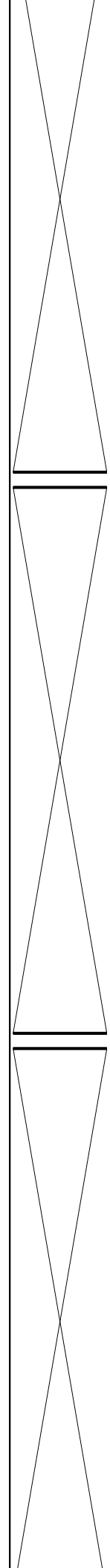
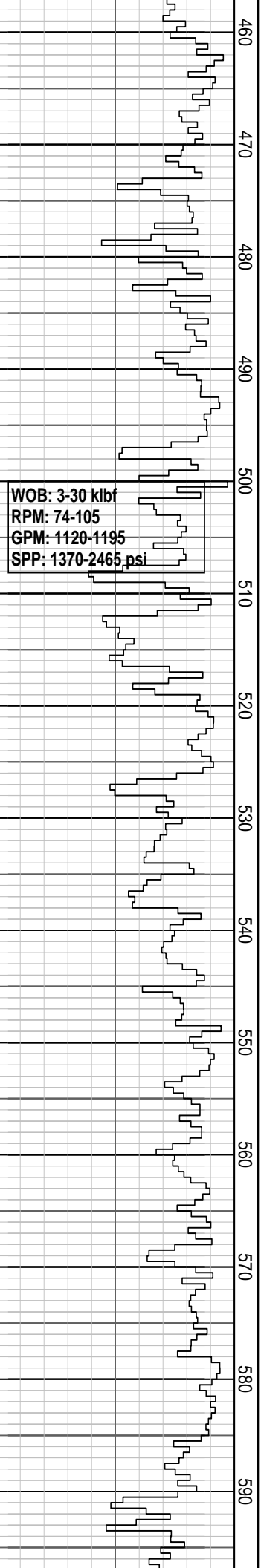
WOB: 2-13 klf
RPM: 71-89
GPM: 1110-1120
SPP: 1285-2150 psi



Drill with sea water and hi-vis
pills, returns to seabed. 91.1
m to 903.0 m



Drill with sea water and hi-vis pills, returns to seabed. 91.1 m to 903.0 m

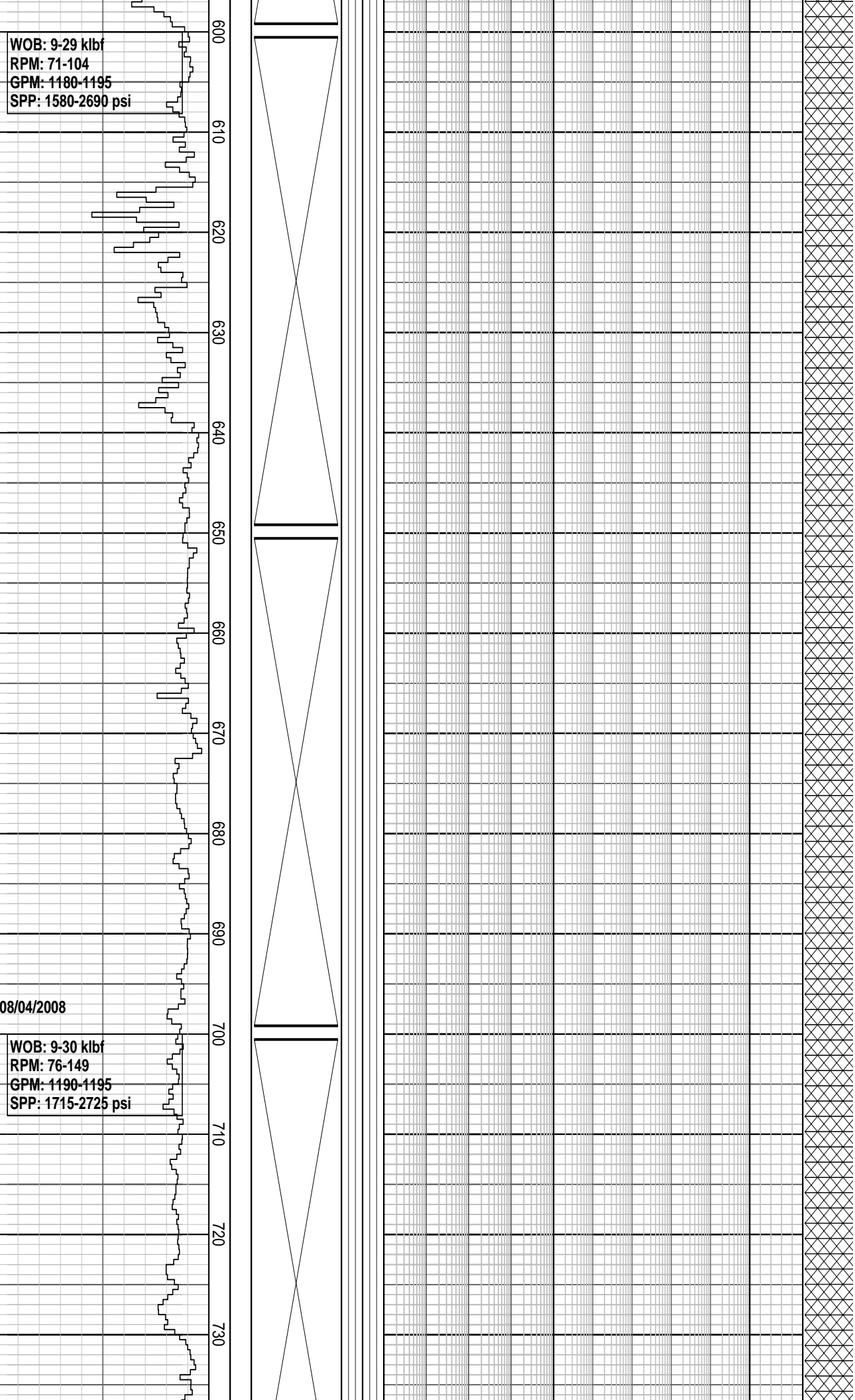


WOB: 9-29 klb
RPM: 71-104
GPM: 1180-1195
SPP: 1580-2690 psi

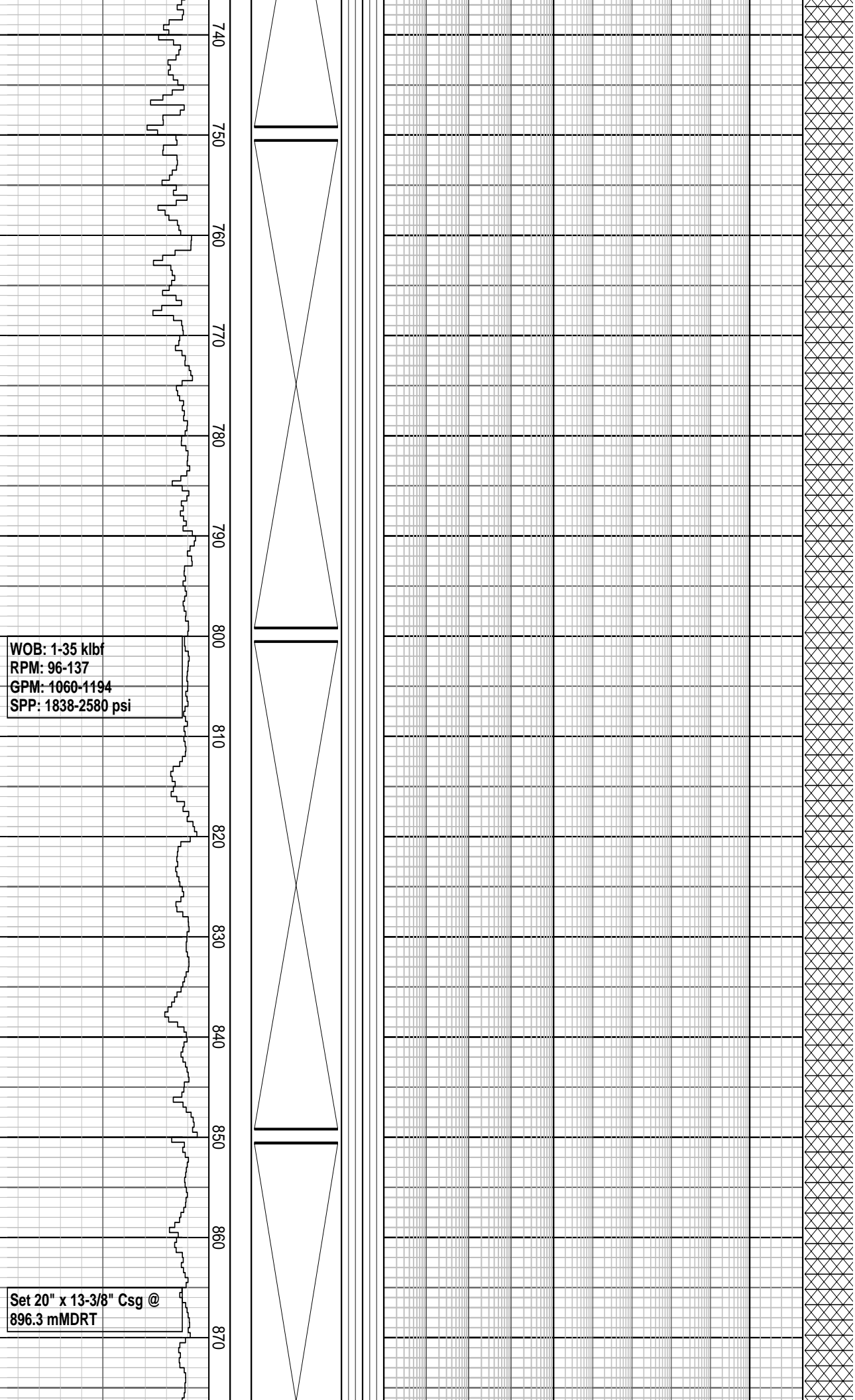
08/04/2008

WOB: 9-30 klb
RPM: 76-149
GPM: 1190-1195
SPP: 1715-2725 psi

Drill with sea water and hi-vis pills, returns to seabed. 91.1 m to 903.0 m



Drill with sea water and hi-vis pills, returns to seabed. 91.1 m to 903.0 m

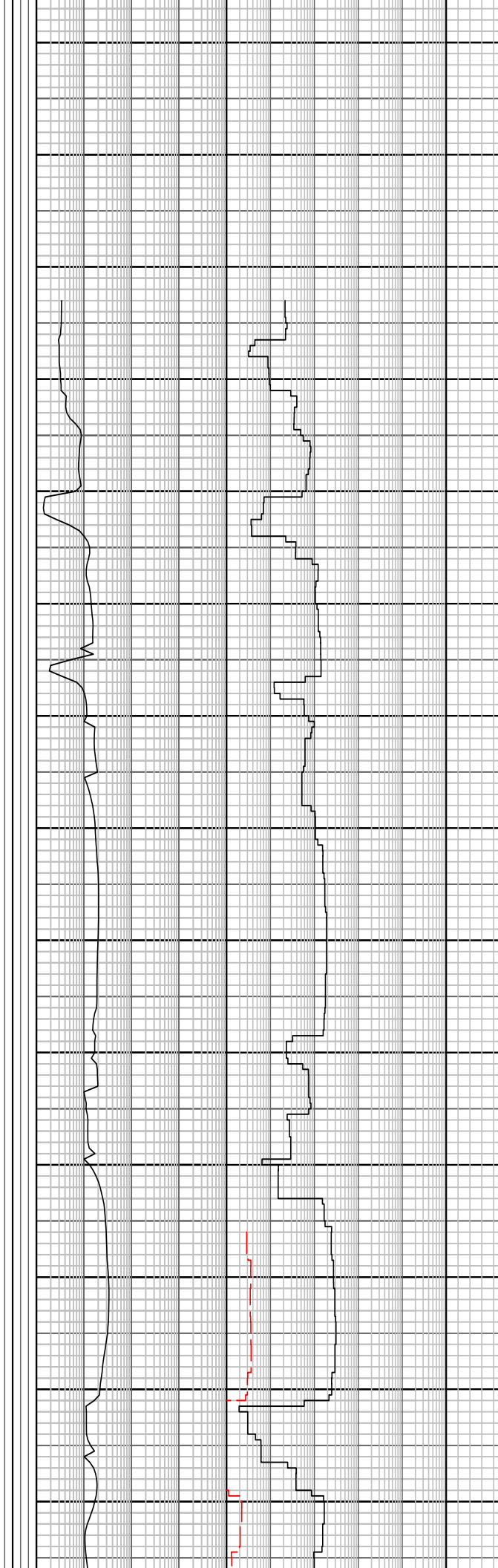
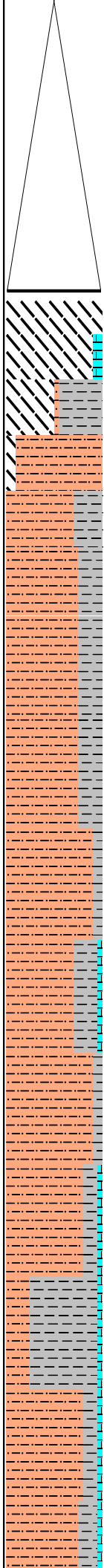


NB3 311 mm (12 1/4")
 Smith
 Type: XP-CPS
 Jets: No Jets
 Depth in: 903.0 m
 Depth Out: 906.0 m
 Drilled 3.0 m in 0.6 hrs
 Grade: XXXXX

NB4 216 mm (8 1/2")
 Hughes
 Type: HC6052
 Jets: 2x16 3x15
 Depth in: 906.0 m
 Depth Out: XXXX m
 Drilled XXX m in XXX hrs
 Grade: XXXXX

WOB: 8-20 klf
 RPM: 58-177
 GPM: 570-885
 SPP: 1170-2525 psi

880
890
900
910
920
930
940
950
960
970
980
990
1000
1010



406 mm (16") Section TD @
 903.0 mMDRT on 09/04/2008

FIT @ 906.0 m, with 1.12 sg
 mud, 620 psi, EMW:1.6 sg

MW: 1.12 sg FV: 71
 PV: 18 YP: 26
 Gels: 11/13 pH: 9.1

CALCARENITE: v lt gy, sft-v
 hd, sb blkly, v arg i/p, qtz gr
 i/p, cal gr i/p

CALCILUTITE: dk yelsh or, v
 lt gy, v arg, v f glauc spk,
 occ v f qtz, tr lith, tr foram
 spines, grd-ARGILLICEOUS
 CALCISILTITE, hd-tr v hd,
 sbbkly-blky.

CALCAREOUS SILTSTONE:
 lt-m gy, v arg, v f glauc spk,
 occ v f qtz grn, tr lith, tr
 foram, grd-CALCAREOUS
 CLAYSTONE, hd-tr v hd,
 sbbkly-blky.

CALCILUTITE: yelsh gy, v lt
 gy, crpxln, hd-sbbkly.
 CALCAREOUS SILTSTONE:
 m lt gy, v arg, v f glauc spk,
 occ v f qtz grn, tr lith, tr
 foram, grd-CALCAREOUS
 CLAYSTONE, calc spks, v
 sft- hd, sbbkly-blky

CALCAREOUS CLAYSTONE:
 m dk gy, sft-frm, slty,
 sbbkly-blky

CALCILUTITE: yelsh gy, v lt
 gy, crpxln, foram, hd-sbbkly

CALCAREOUS SILTSTONE:
 m lt gy, v arg, v f glauc spk,
 occ v f qtz grn, tr lith, tr
 foram, grd-CALCAREOUS
 CLAYSTONE, calc spks, v
 sft- hd, sbbkly-blky

CALCILUTITE: yelsh gy, v lt
 gy, crpxln, foram, hd-sbbkly

CALCAREOUS CLAYSTONE:
 m-lt gy, spkled w kaolinitic
 cly, tr v f glauc, calc spks,
 sft-frm, slty, sbbkly-blky

CALCAREOUS SILTSTONE:
 m lt gy, v arg, v f glauc spk,

